

Husqvarna TS100R

Pièces de rechange

Spare parts

Ersatzteile

Piezas de repuesto

Ricambi

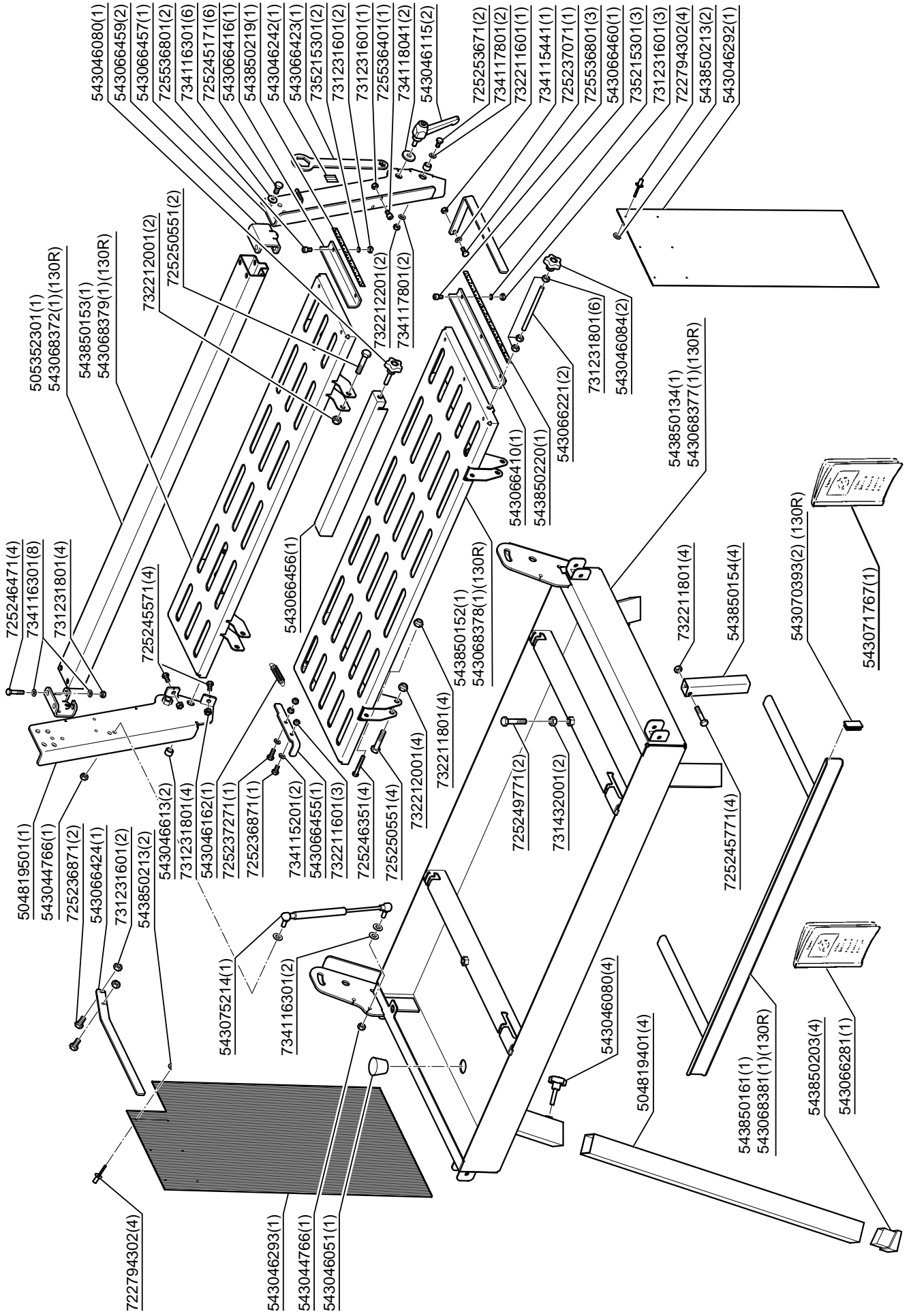
Onderdelen

Reservdelar

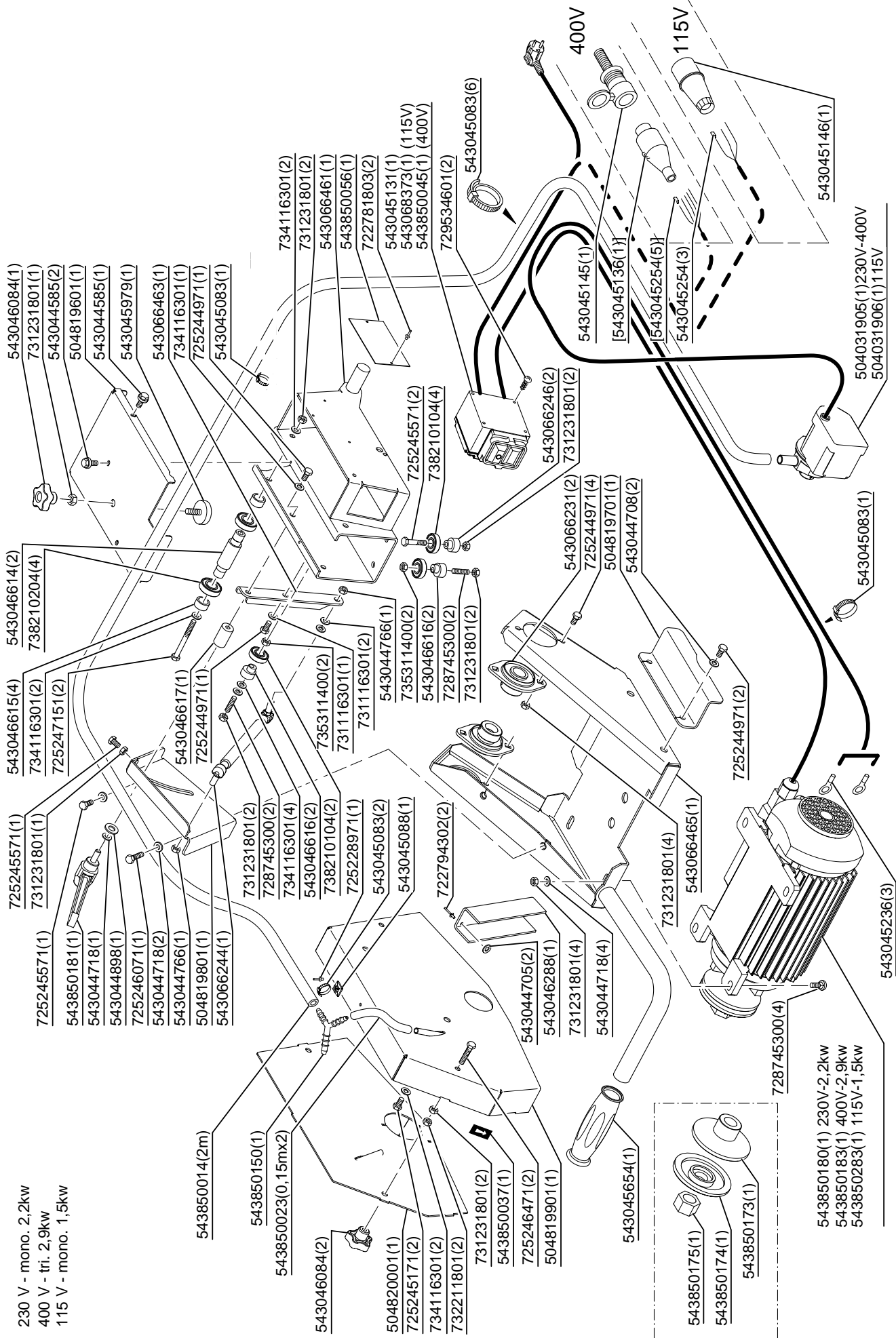
Peças sobresselentes

No.	Pos.	Description	No.	Pos.	Description
504 031 905	B	Water pump 230V 50Hz	543 066 457	A	Arm, front
504 031 906	B	Water pump 115V 50Hz	543 066 459	A	Rail support
504 819 401	A	Legs	543 066 460	A	Mud guard support, front
504 819 501	A	Arm, rear	543 066 461	B	Trolley
504 819 601	B	Chariot cover	543 066 463	B	Jack fixation
504 819 701	B	Motor protection	543 066 465	B	Motor support
504 819 801	B	Adjustment sheet	543 068 372	A	Rail, TS 130 R
504 819 901	B	Blade guard, interior	543 068 377	A	Tank TS 130 R
504 820 001	B	Blade protection, external	543 068 378	A	Table, front TS 130 R
505 352 301	A	Rail, TS 100 R	543 068 379	A	Table, back TS 130 R
543 044 585	B	Screw, Hex M5X12	543 068 381	A	Table extension TS 130 R
543 044 718	B	WASHER (Φ22-Φ8.5)X2	543 070 393	A	Nozzle PVC 40/20
543 044 766	A-B	Nut, Ballhead M8x125	543 071 767	A	Part list Manual TS 100 R
543 044 898	B	WASHER, PVC 8.4/25/2.5	543 075 214	A	GAS SPRING
543 045 083	B	NYLON tie 5x350	543 850 014	B	Hose (Φ14-Φ10)
543 045 088	B	Nylon cable (spanner)	543 850 023	B	Hose 12/8
543 045 131	B	SWITCH KEDU 230V	543 850 037	B	Sticker, Blade direction
543 045 136	B	Male plug 3P+N+T 16A 6H	543 850 045	B	SWITCH 400V
543 045 145	B	Female plug 3P+N+T 16A 6H	543 850 056	B	Name plate, TS100R, Europe
543 045 146	B	PLUG 110V	543 850 111	A	Screw, hex M10X35
543 045 236	B	Electric pod D4	543 850 134	A	Tank TS 100 R
543 045 254	B	Round end connector	543 850 150	B	Y-coupling for hose
543 045 654	B	Handle, rubber d.25	543 850 152	A	Table, front TS 100 R
543 045 979	B	Anti-vibration support	543 850 153	A	Table, back TS 100 R
543 046 051	A	Plug, rubber 34D 28/34/30	543 850 154	A	Handle
543 046 080	A	Handle M8x20, male	543 850 161	A	Table extension TS 100 R
543 046 084	A-B	Nut, plastic wrenchhead M8	543 850 173	B	Driving flange
543 046 115	A	HANDLE M12x25 L78, aluminium	543 850 174	B	Modified flange
543 046 162	A	Spring	543 850 175	B	Special nut
543 046 242	A	Rubber protection	543 850 180	B	Motor 2,2 kW, 230V
543 046 288	B	Splash guard, blade	543 850 181	B	Handle, aluminum M8x30
543 046 292	A	Splash guard, front	543 850 183	B	Motor 2,9 kW, 400V
543 046 293	A	Splash guard, back	543 850 203	A	Feet Pad on TS350E/TS400
543 046 613	A	Rotation ring	543 850 219	A	Ruler, right
543 046 614	B	Sup. bearing shaft	543 850 220	A	Ruler, left
543 046 615	B	Sup bearing ring	543 850 283	B	Motor 1,5 KW, 115V
543 046 616	B	Excentric bearing support	722 781 803	A	Rivet 3.2x6,7 aluminium,
543 046 617	B	Height adjustment spacer	722 794 302	A-B	Rivet, aluminium 4x10,3
543 066 221	A	Table extension fixing screw	725 228 971	B	Screw, hex M4x10 FT
543 066 231	B	Bearing SA204, with support	725 236 871	A	SCREW, hex M6X16
543 066 244	B	GAS SPRING 5012DN	725 237 071	A	Screw, Hex M6X20
543 066 246	B	Bearing support	725 237 271	A	Screw, Hex M6X25
543 066 281	A	Operating Manual TS100R	725 244 971	B	Screw, hex M8x16
543 066 410	A	Table stop, front	725 245 171	A-B	Screw, Hex M8X20
543 066 416	A	Table stop, back	725 245 571	A-B	Screw, Hex, M8X30 TH
543 066 423	A	Key	725 245 771	A	Screw, hex M8x35
543 066 424	A	Mudguard Support, back	725 246 071	B	Screw, hex M8X45 FT, without head
543 066 455	A	Table Lock			
543 066 456	A	Ruler			

No.	Pos.	Description	No.	Pos.	Description
725 246 351	A	Screw, Hex M8X60			
725 246 471	B	Screw, hex M8x65 FT(fullthreaded)			
725 247 151	B	Screw, Hex M8X100			
725 250 551	A	Screw, hex M10x70			
725 253 671	A	SCREW, hex M12X30			
725 536 801	A	Screw inhex M6x16			
728 745 300	B	Screw, Inhex M8x25 sharpened			
729 543 601	B	Screw, ST 4,2x19 large head			
731 231 601	A	NUT HU M6 (thicker)			
731 231 801	A-B	NUT HH M8 (thicker)			
731 432 001	A	Nut, M10			
732 211 601	A	Nut, nyloc M6			
732 211 801	A-B	Nut, nyloc M8			
732 212 001	A	Nut, nyloc M10			
732 212 201	A	Nut, nyloc M12			
734 115 201	A	WASHER 6			
734 115 441	A	WASHER L6 Large			
734 116 301	A-B	WASHER 8			
734 117 801	A	WASHER 12			
734 118 041	A	WASHER, L12			
735 115 301	A	Washer, spring 6			
735 116 401	A	Washer, spring 6			
738 210 104	B	BALL BEARING 6001-2RS1			
738 210 204	B	Ball bearing 6002DW			



230 V - mono. 2,2kw
 400 V - tri. 2,9kw
 115 V - mono. 1,5kw





www.husqvarnacp.com